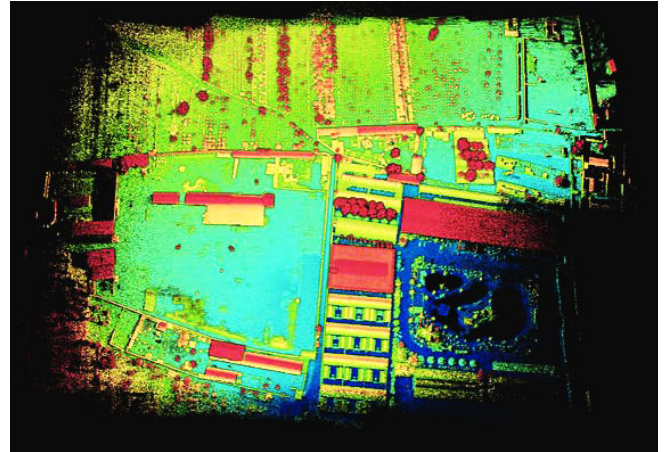


LiGEOREFERENCE

Georeferencing Software

LiGeoreference is proprietary software that allows users to convert range measurements and POS information from mobile, UAV or airborne laser scanning systems to georeferenced coordinates. The software provides flexible solutions for generating 3D point clouds in LAS or LiData formats with LiDAR returns mapped to a userspecified datum (e.g. WGS 1984) and/ or projection system (e.g. UTM). LiGeoreference also provides data fusion tools to assign LiDAR points with color information based on the color imagery integrated into the laser scanning system. Laser scanners from multiple providers, such as Riegl and Velodyne, are supported.



Features

- Automatically calculate the georeference coordinates of LiDAR point cloud from mobile, UAV or airborne laser scanning systems.
- Fuse LiDAR point clouds with RGB imagery to assigned color information to each LiDAR point.
- Support the output of both geographic coordinates and projected coordinates.
- Support the process of laser scanning measurements from multiple laser scanner providers.

