



*Point Cloud Feature Intelligent  
Extraction and Analysis Software*

[www.greenvalleyintl.com](http://www.greenvalleyintl.com)

**LIDAR360 MLS**





# SOFTWARE

## POINT CLOUD FEATURE INTELLIGENT EXTRACTION AND ANALYSIS SOFTWARE

LiDAR360MLS is a terrestrial mobile laser scanning (MLS) point cloud feature intelligent extraction and analysis software independently developed by GreenValley International, which supports the processing and analysis of LiDAR point cloud and image data obtained by mainstream vehicle-mounted, backpack, or handled mobile mapping systems on the market.

Based on the leading artificial intelligence algorithm, the software performs massive point cloud data editing, 3D feature extraction and analysis, 3D vectorization of road elements, etc. It has the features of rich function, convenient operation, intelligent and efficient, friendly interaction, forming a complete processing chain of MLS point cloud data processing, high definition map and road asset survey.

The result data exported by the software can be directly imported into GIS, CAD, and simulation platforms, which can be widely used in high definition map production, facade survey, road asset survey and maintenance, etc. LiDAR360MLS accelerates information extraction with intelligence and depicts the real world with digitalization.

The screenshot displays the LiDAR360MLS software interface. The top menu bar includes File, Tools, Preprocessing, Classification, Profile, Cut Block, Map Element, Facility, Vector Editor, Facade Survey, Appearance, and Road Analysis. The toolbar contains various icons for operations like Pick Point, Pick Multi-Point, Density, Measurement, Hover, Plane, Plane Distance, In/Out, Save, Cancel, Cross Section, Trajectory, Camera, Import, Orthophoto, Point Cloud Conversion, Projection, and Export. The left sidebar shows a Layers panel with a tree view of data elements such as Base Data, Vector, VirtualLaneCenterline, LaneLine, Stopline, RoadSideLine, Crosswalk, RoadMarking, RoadPole, StreetLight, TrafficLight, TrafficSign, Spot, RoadSurface, CentralsolationLine, CentralsolationZone, TrafficLightPoint, SurveillanceCamera, TrafficSignPoint, GuideLine, ForbidLine, PlanarFacilities, Tree, Pole, Custom Vector, and Tables. The main 3D view area is currently black, overlaid with six circular icons representing key software features.

- Massive Data Loading and Processing
- Multi-Source Data Fusion Mapping and Analysis
- Independently Developed Underlying Engine
- Efficient and Friendly 3D Interactive Editing
- Leading Artificial Intelligence Algorithm
- Integrated Management of Collection, Editing, Database Storage, etc.



# CONTENTS

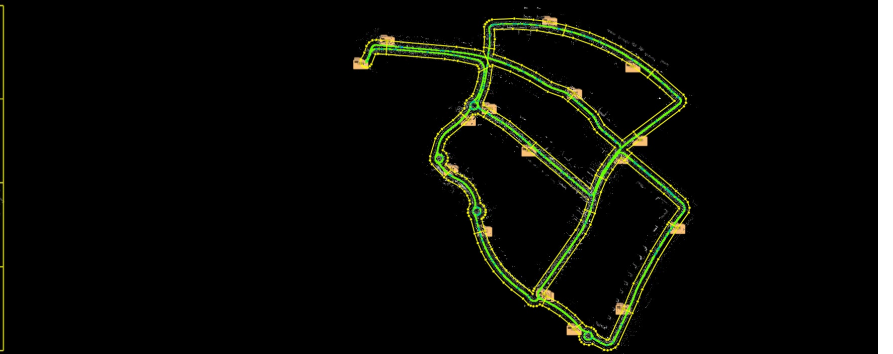
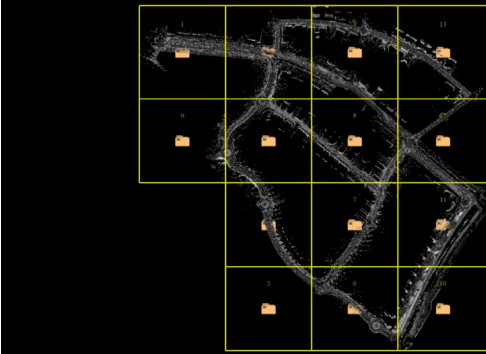
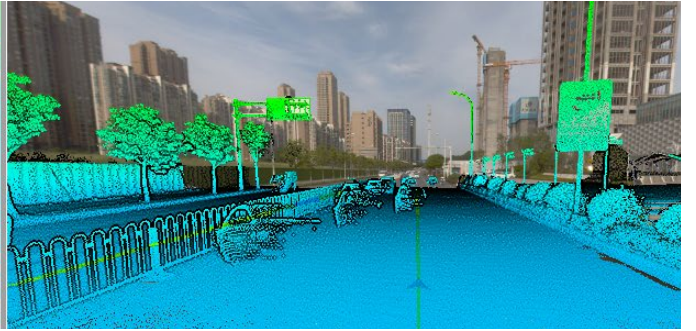
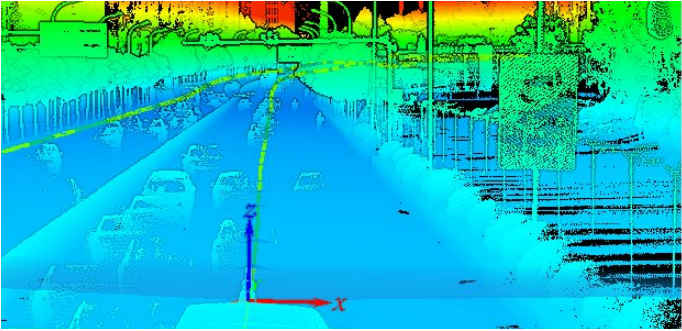
<b>01</b>	Foundation Platform -----	04
<b>02</b>	Mobile Laser Scanning Point Cloud Preprocessing -----	08
<b>03</b>	Map Element -----	10
<b>04</b>	Vector Editor -----	12
<b>05</b>	Architectural Drawings -----	14
<b>06</b>	Road Analysis -----	16
<b>07</b>	Urban Forestry -----	18

# Main Modules

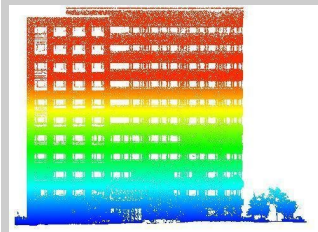
## *Foundation Platform*

- Supports point cloud and panoramic data of mainstream mobile mapping systems on the market for processing and mapping.
- Support overlap display of multiple planar cameras, panoramic camera and point cloud data , measurement and boresight calibration ,assist data acquisition and editing.
- Combination display of multiple attributes, with additional attributes, to meet more application requirements.
- Rich point cloud snap tools, support automatic snap of feature points such as planes, ridges, and corners.
- Multiple block modes, work together to improve efficiency.
- AI-based point cloud semantic segmentation algorithm, which can quickly obtain high-precision results and accelerate the efficiency of subsequent production analysis.
- Added classification pre-training models for indoor and outdoor scene point cloud data obtained by SLAM device.
- New custom point cloud deep learning classification, users can train models suitable for their own data, and also added a few-sample learning model.
- Support vector result database storage for convenient management and format conversion.

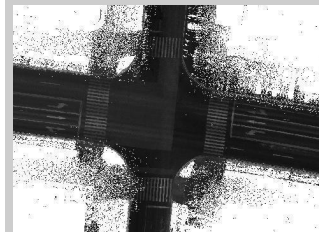




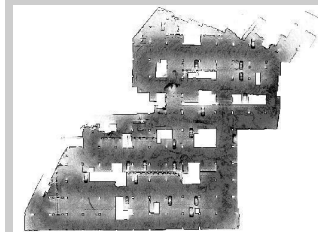
Height



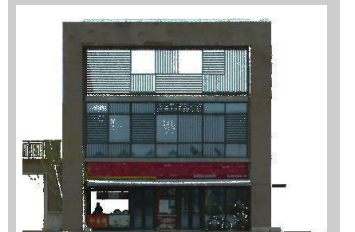
Intensity



Density



RGB

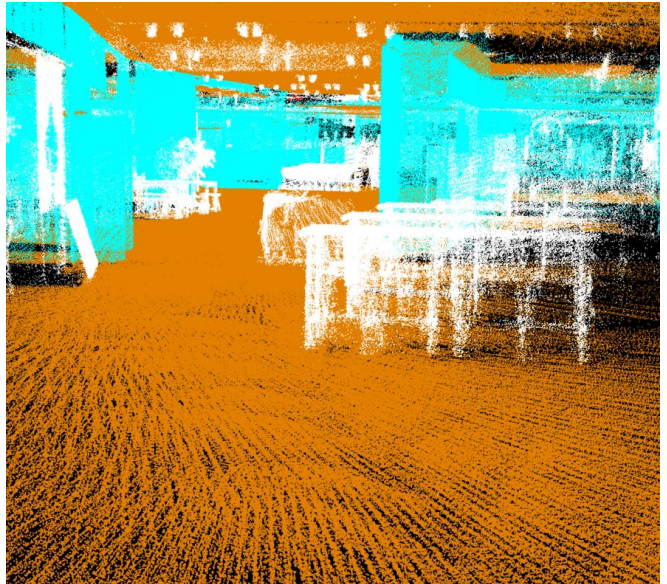
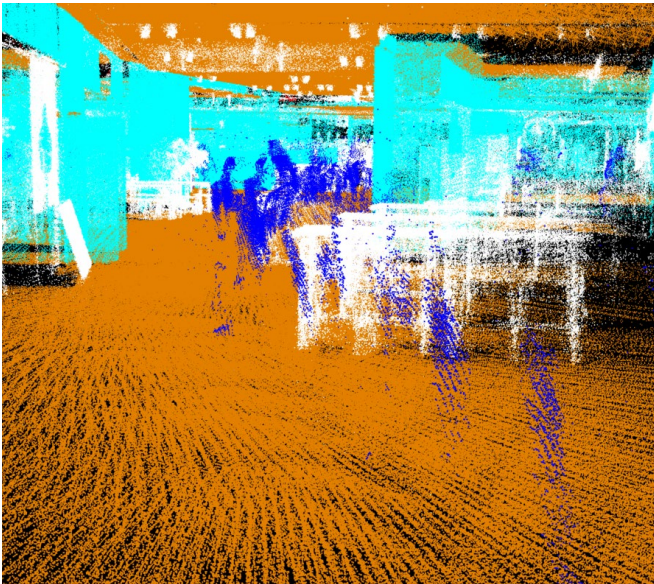




Underground Parking Garage

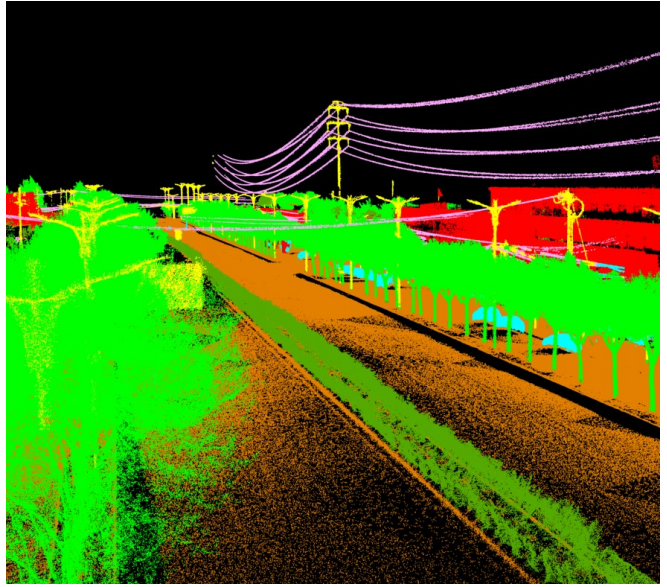
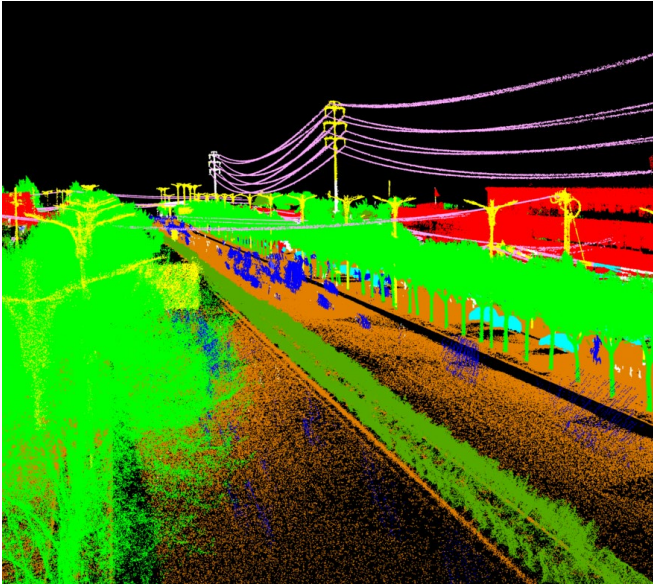


Shopping Mall

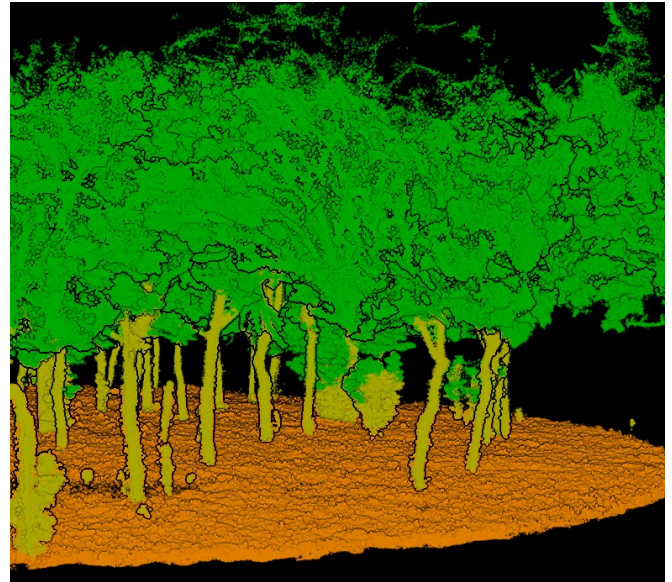
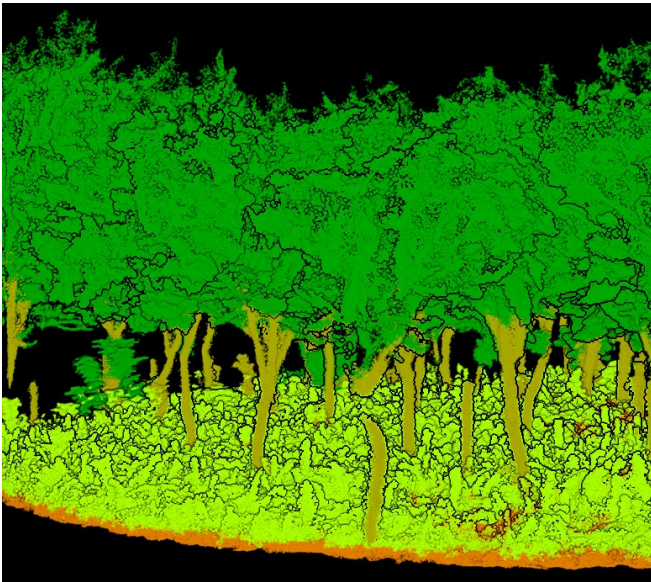




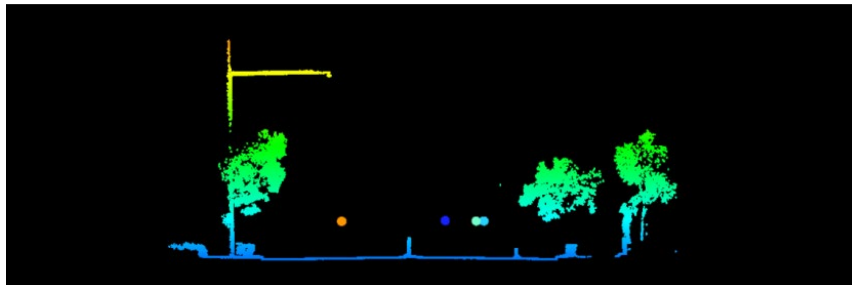
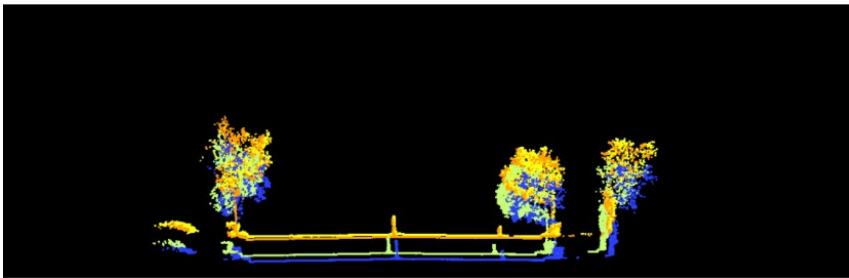
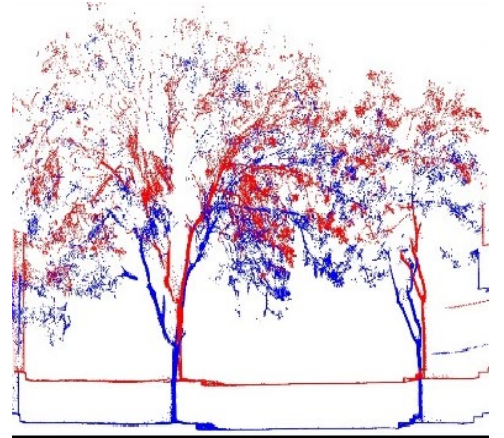
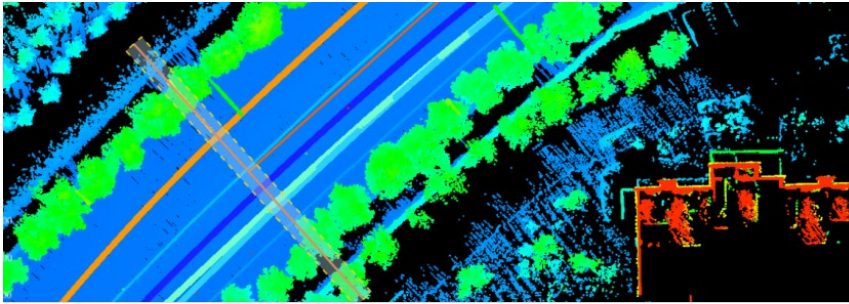
Urban Road



Forestry

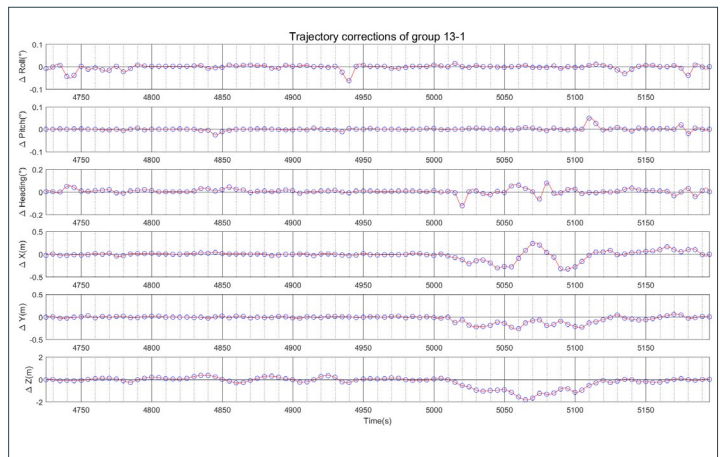
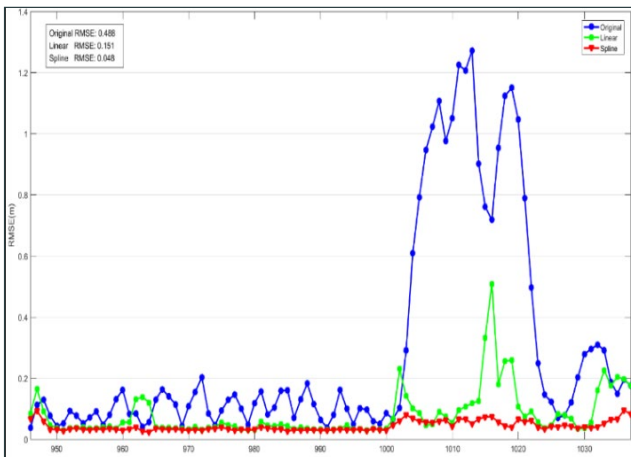
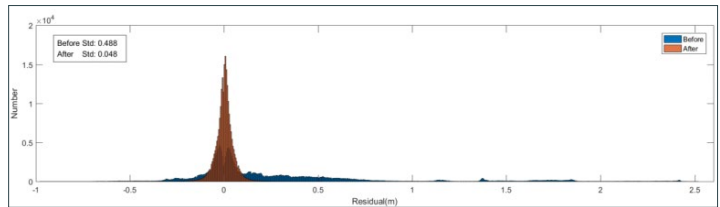
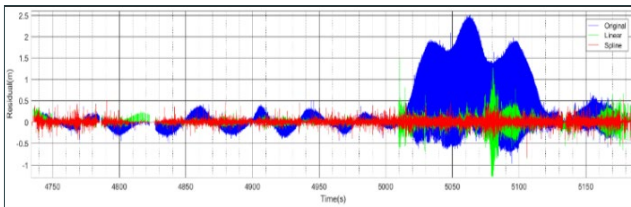


# *Mobile Laser Scanning Point Cloud Preprocessing*





- Support point cloud boresight calibration, panoramic or planar camera extrinsic calibration, the mapping system does not need to be returned to the factory for calibration.
- Support point cloud and trajectory accuracy analysis, automatically identify and repair abnormal conditions such as trajectory jumps.
- Support relative alignment of MLS point cloud data, global optimization of multiple projects with control points, and output detailed accuracy reports to provide high-precision data support for subsequent applications.



# Map Element

## *Feature Extraction*

- Automatic extraction of road elements and road facilities based on AI, which greatly improves efficiency and can quickly expand categories.
- Customizable road element symbol library, the drawing effect is 100% fit.
- Support the drawing of special symbols such as Chinese characters and letters, and enrich the achievement database.
- Interactive semi-automatic multi-element detection, improvement of mapping efficiency.
- Rich road element templates, one-click drag and drop.
- Support linear facility template customization to achieve batch extraction of line elements.
- Support individual segmentation and parameter extraction of road facilities such as poles and cars.



**Road Shape**

Add Virtual Lane Centerline
 Add Lane Solidline
 Add Stopline
 Add Road Side Line
 Generate Virtual Lane Centerline
 Detect Lane
 Detect Road

**Arrow**

Add Straight
 Add Left
 Add Right
 Add Left / Right
 Add Straight / Left

Add Straight / Right
 Add Straight / Left / Right
 Add Turn Round
 Add Straight / Turn Round
 Add Left / Turn Round

Add Left Merge
 Add Right Merge
 Add Right / Turn Round
 Add Straight / Right / Turn
 Add Left / Right / Turn Round

**Horizontal Marking**

Add Cross Walk
 Add Longitudinal

**Pavement Graphic Marking**

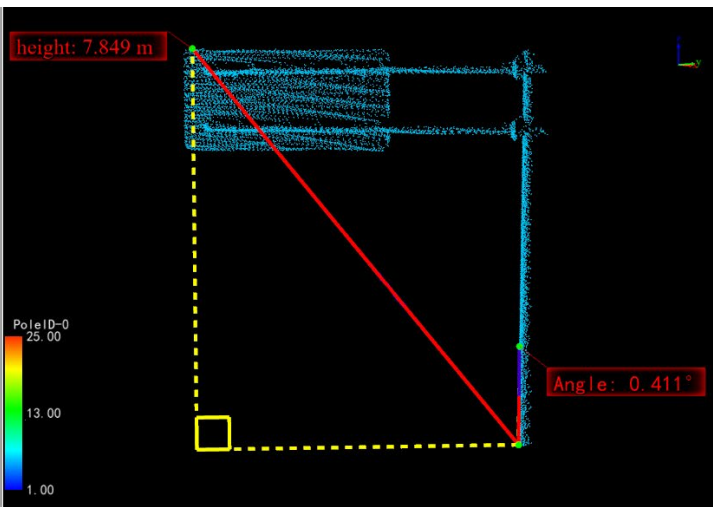
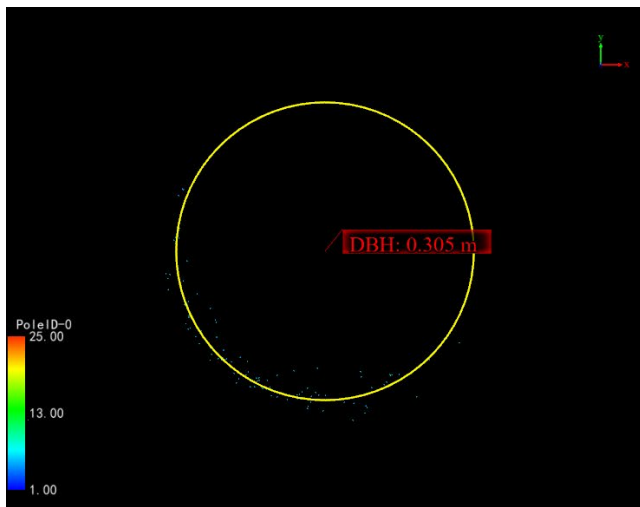
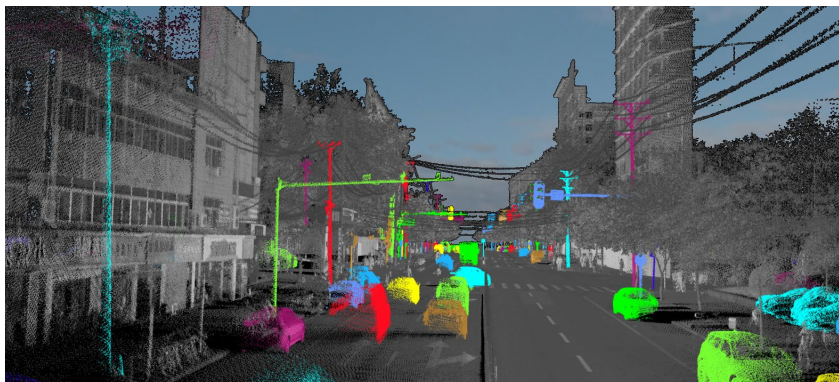
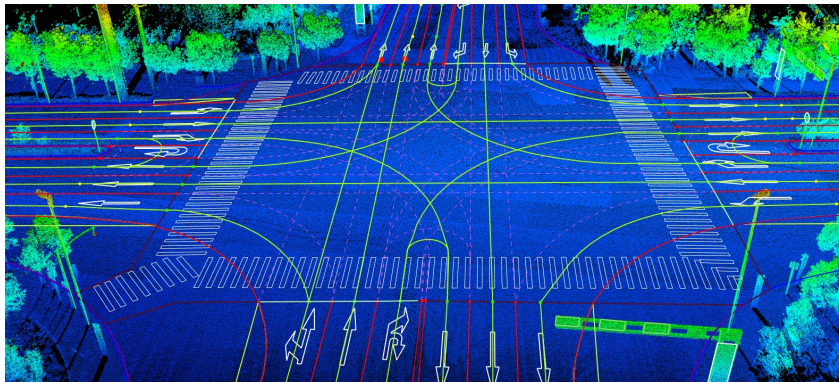
Add Cross Walk Warning
 Add Speed Reduction
 Add No-Parking
 Add Bicycle Lane
 Add No U-Turn

Add Font

**Facility**

Detect Pole Struct
 Detect PowerLine
 Add TrafficSign
 Add Parking Spot
 Add Rain / Strainer

Add Manhole



Feature Objects Table

Type: Pole Calculation

Object ID	DBH(m)	Height(m)	Angle(°)	CrownWidth(m)
6	0.305	7.849	0.411	0.000

# *Gaoyuan Road* Vector Editor

- Image (panoramic, planar, orthophoto ) based vector drawing and editing.
- Rich vector editing tools, convenient operation, improve the accuracy and reliability of vectors.
- Support shortcut keys customization to improve the operability of production staff.
- Support mapping in multi-view (3D, 2D, section).
- Support precise editing of different snap modes.
- Support attribute table template configuration.
- Built-in national standard road asset symbol library and general symbol library.
- Support point cloud, feature, vertex/edge multi-level data to add annotation.
- Support field calculator and object photo database storage.
- Attribute and geometry quality check tool.

*Minkang Street*

*Gaoyuan Road*



**Drawing**

Add Point Add Multi-point Add Line Add Line Segment Add Arc Add Polygon Add Rect Add Parallelogram Add Circle Add Hexagon Add Octagon

**Auxiliary**

Grip To Ground Add Trace Line Add Trace Polygon Draw By Intersection Draw By Perpendicular

**Interrupt**

Point Split Line Line Split Line Line Split Polygon Line Split Objects

**Node Editor**

Edit Vector Node Insert Vector Node Remove Vector Node Node Edit

**Alignment**

Move Parallel Copy Rotate Scale Polygon Mirror

**Reshape**

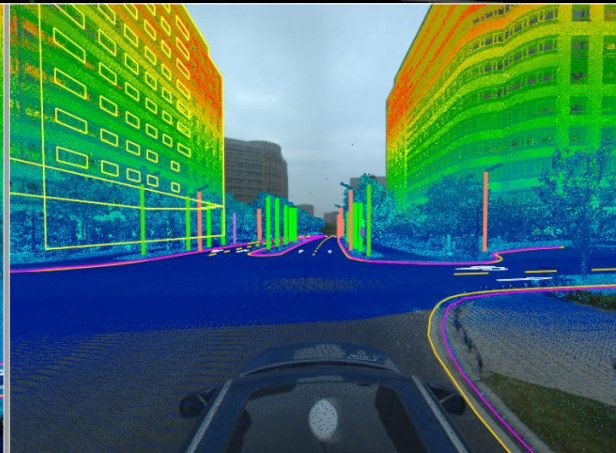
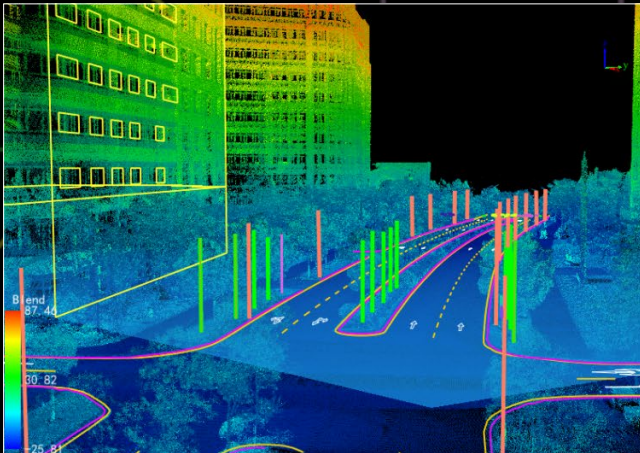
ReShape Line ReShape Rect Merge Lines Break Line Split Line Extend or Trim

Splitte And Merge Polygon Hook Lines Extend Lines Fillet Split Multipolygon Combine Polygons Points

**Select**

Pick RectanglePick Polygon Lasso Circle LinePick

Box Sphere Cylinder



RoadMarking

Add Field	Delete Field	Start Edit	Export CSV
FID	Shape	ID	
1	1	Polygon ZM	98
2	2	Polygon ZM	99
3	3	Polygon ZM	100
4	4	Polygon ZM	101

Manhole RoadMarking Stopline

TrafficSign

Add Field	Delete Field	Start Edit	Export CSV
FID	Shape	ID	
1	1	Polygon ZM	133
2	2	Polygon ZM	134
3	3	Polygon ZM	135
4	4	Polygon ZM	136

TrafficSign Tree

UtilityPole

Add Field	Delete Field	Start Edit	Export CSV
FID	Shape	ID	
1	1	Polyline ZM	80
2	2	Polyline ZM	81
3	3	Polyline ZM	82
4	4	Polyline ZM	83

UtilityPole RainStrainer

StreetLight

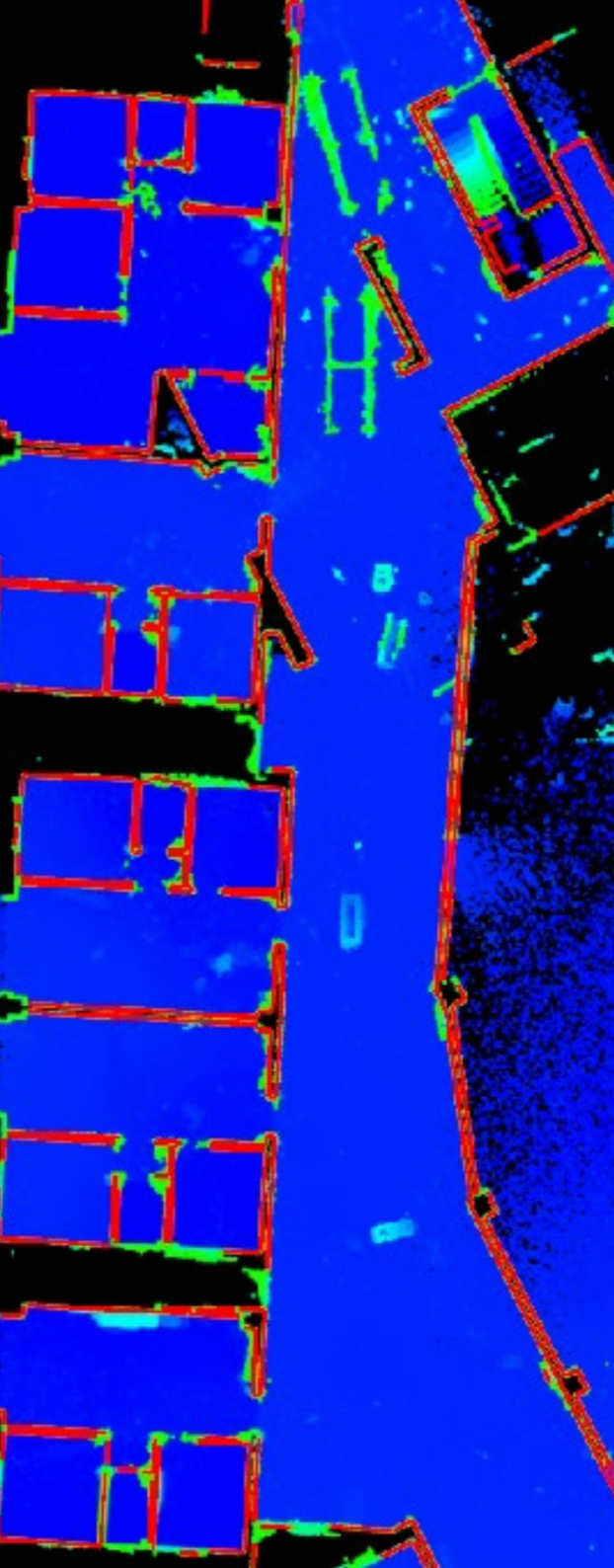
Add Field	Delete Field	Start Edit	
FID	Shape	ID	
1	1	Polyline ZM	89
2	2	Polyline ZM	90
3	3	Polyline ZM	91
4	4	Polyline ZM	92

StreetLight ParkingSpot

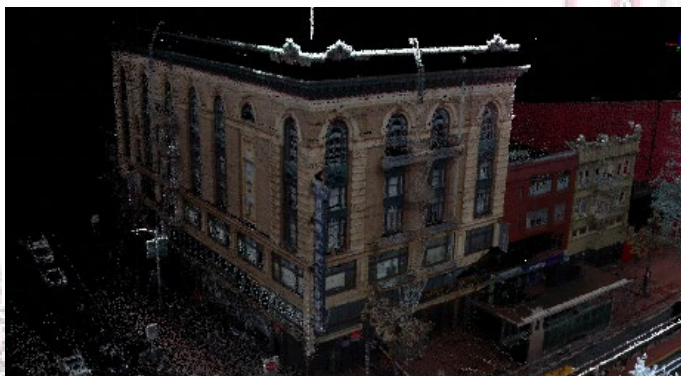
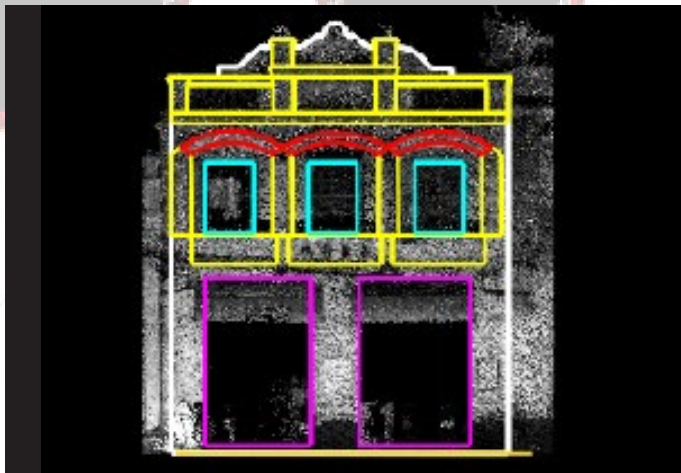
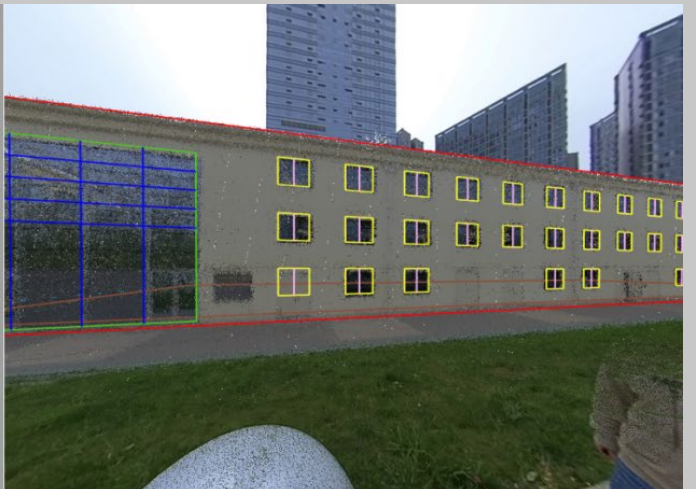
Minkang Street

# Architectural Drawings

- Seamlessly import LiGrip/LiBackpack/LiMobile point cloud and image data without format conversion and coordinate system definition
- Provide automatic vectorization function for floor plan.
- Provide multi-mode baseline collection method, adapt to multiple types of facade structures, and accurately locate side facade information
- Provide point cloud polygonal/curved/cylindrical section unrolling function.
- Provide convenient drawing tools such as construction lines, grouping arrays, line Intersection, etc to speed up production efficiency
- Using panoramic images to assist architectural drawings, making the drawing of elements more complete and accurate
- Provide accurate length and area calculation functions, and support exporting tables in other formats
- Support exporting DXF, Orthophoto, BluePrint result data, etc.







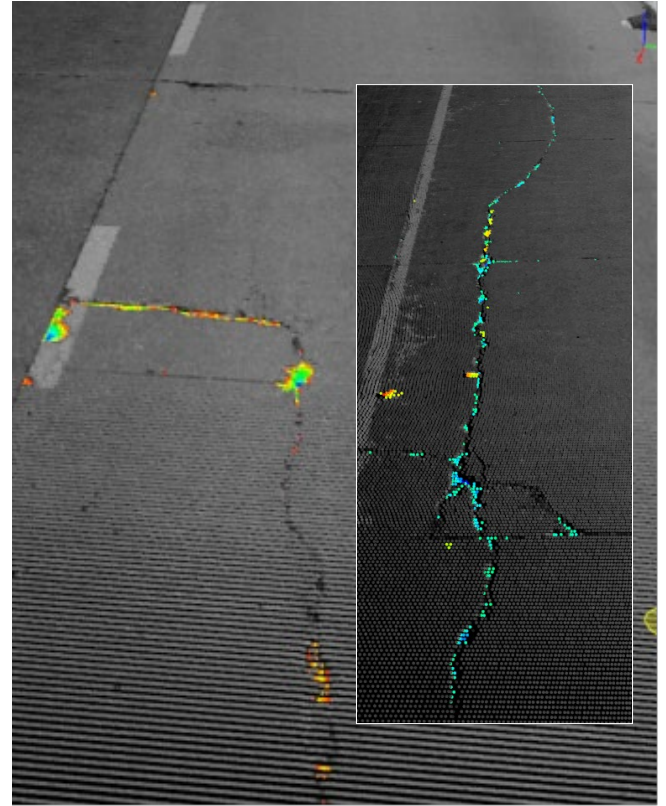


# Road Analysis



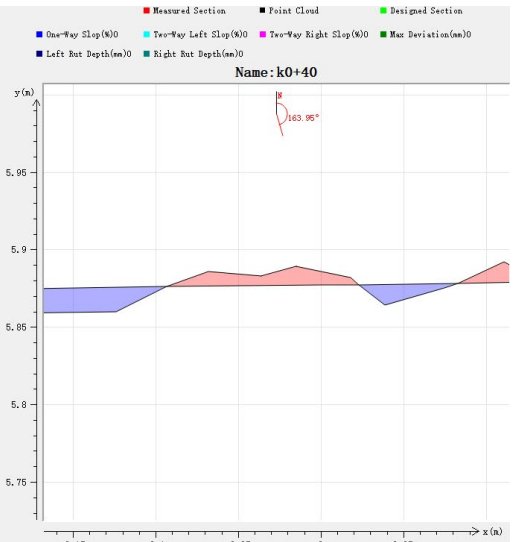
- Extract road surface damage information based on high-precision MLS point cloud data to assist road maintenance inspection.
- Support 3D space analysis methods such as clearance analysis and viewshed analysis.
- Support road section analysis, compare and analyze multi-phase data and generate standard comparison reports.
- Support the calculation of various road section parameters to assist in the analysis of road construction and other operations.





Name	Real Mileage
CentralAxis0	-1
k0+0	0
k0+20	20
k0+40	40
k0+60	60
k0+80	80
k0+100	100
k0+120	120
k0+140	140
k0+160	160

Attribute	Value
<b>Section Base Info</b>	
Section Name	k0+40
Mileage(m)	k0+40
<b>Measured Section</b>	
Width(m)	9.999
Height(m)	0.159
Central Pile Height...	5.867
Length(m)	10.033
Cut(m)	<input type="checkbox"/> Visible
Cut Area(m²)	0.038
Fill Area(m²)	0.002
Fill-Cut Area(m²)	0.036
Cut Volume(Cubic ...)	1.533
Fill Volume(Cubic ...)	0.099
Fill-Cut Volume(Cu...	1.434
<b>RoadSectionAnaly...</b>	
One-Way Slop(%)	1.639
Two-Way Left Slop...	1.840
Two-Way Right SL...	1.439
Cross Section rou...	9.122
Max Deviation(mm)	23.357
Left Rut Depth(mm)	11.332
Right Rut Depth(m...	11.583
Rut Depth Index	76.834

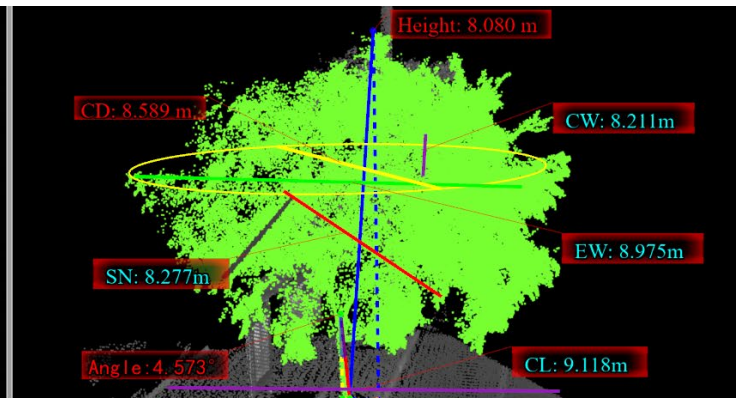
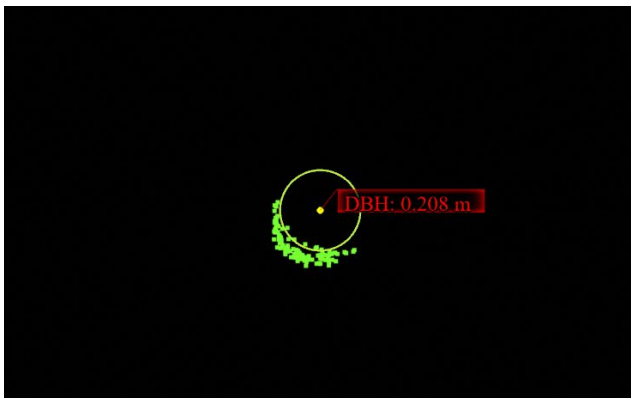
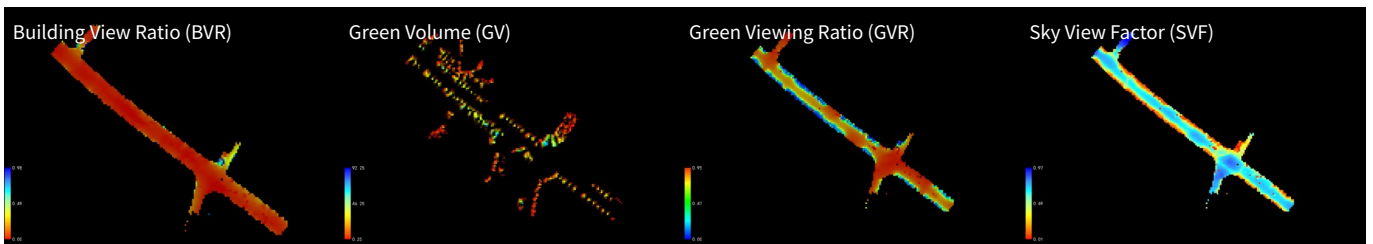
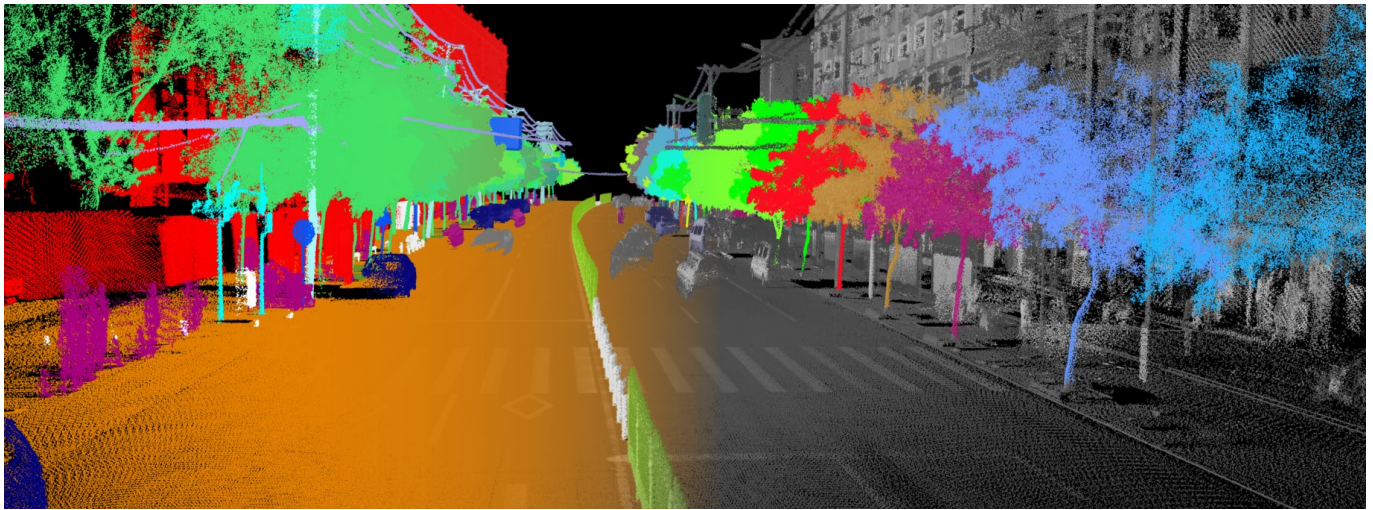




# Urban Forestry

- AI-based point cloud classification.
- Single tree segmentation and parameter extraction.
- Single tree parameter measurement.
- Supports measurement of parameters including DBH, Height, Crown Width, Crown Length, Crown Diameter, Crown Diameter SN, Crown Diameter EW ,CBH, Angle, Area, etc.
- Ecological landscape thematic map.
- Simulation analysis of Green Viewing Ratio(GVR), Green Volume, Sky View Factor(SVF), etc.





	ImageName	Image	Object ID	DBH	Height	Angle	CrownDiameter	rownDiameterSI	rownDiameterEI	CrownLength	CrownWidth	CBH	Straightness	Volume
3	NULL	NULL	69	0.236	8.886	2.410	8.972	8.862	9.082	9.151	8.920	0.000	0.000	56.406
4	NULL	NULL	70	0.208	8.080	4.573	8.589	8.246	8.932	9.118	8.211	0.000	0.000	54.508
5	NULL	NULL	71	0.151	6.769	8.718	7.280	7.145	7.415	8.057	6.787	0.000	0.000	38.711
6	NULL	NULL	72	0.137	7.158	7.356	6.749	6.242	7.256	7.446	6.387	0.000	0.000	29.172



---

[www.greenvalleyintl.com](http://www.greenvalleyintl.com)   [info@greenvalleyintl.com](mailto:info@greenvalleyintl.com)

729 Heinz Avenue, Suite 9, Berkeley, CA 94710, USA

---